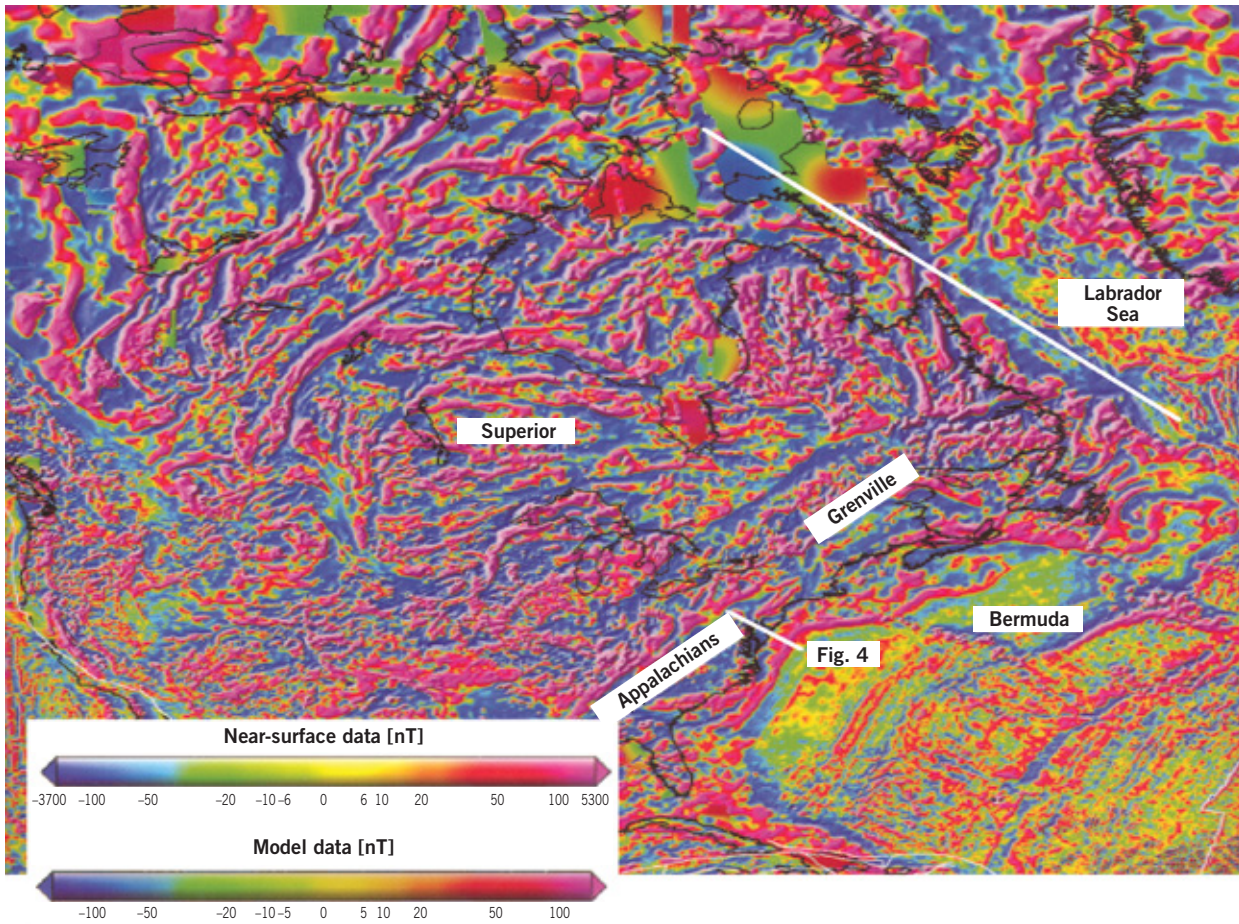


NORTH AMERICA*

FIG. 1

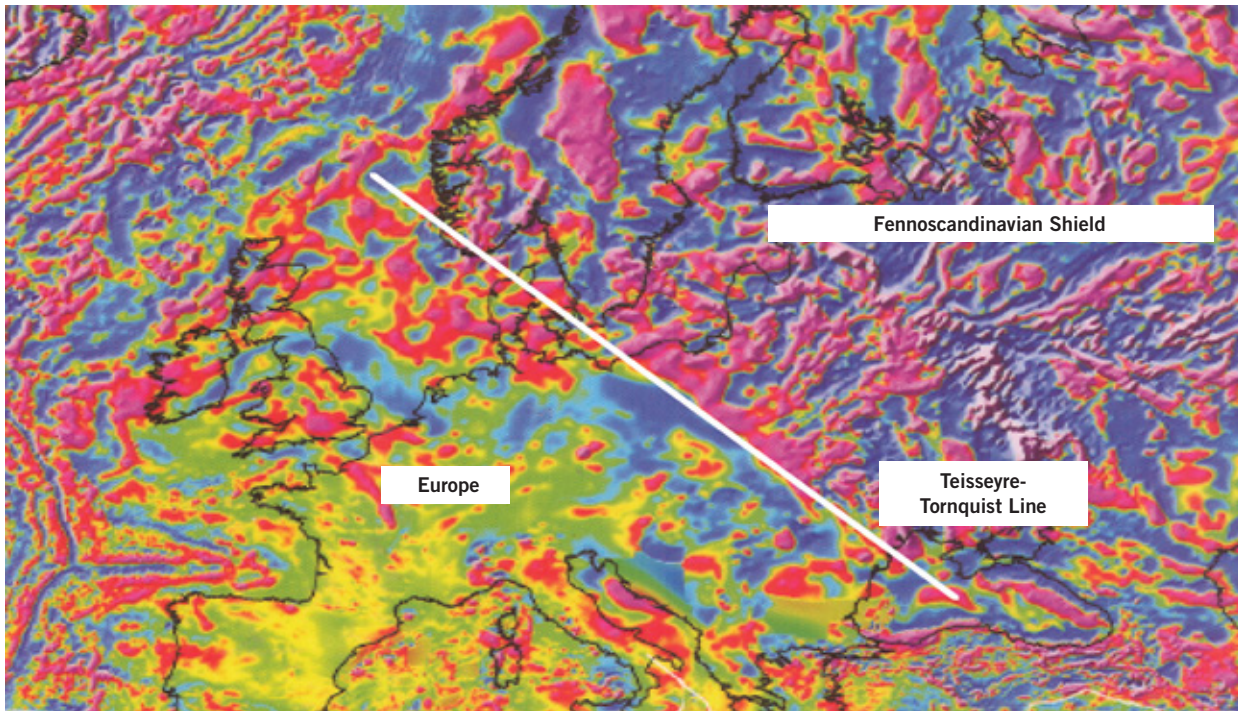


*Compare with the map of North American basement (Wilko, 2008) to identify patterns associated with ancient provinces such as Superior, Grenville, Appalachians on the mainland and note the contrast with the extended offshore region (Fig. 4).
Source: Alter Korhonen et al., 2007.

z1103070G.jxja01

EUROPE*

FIG. 2

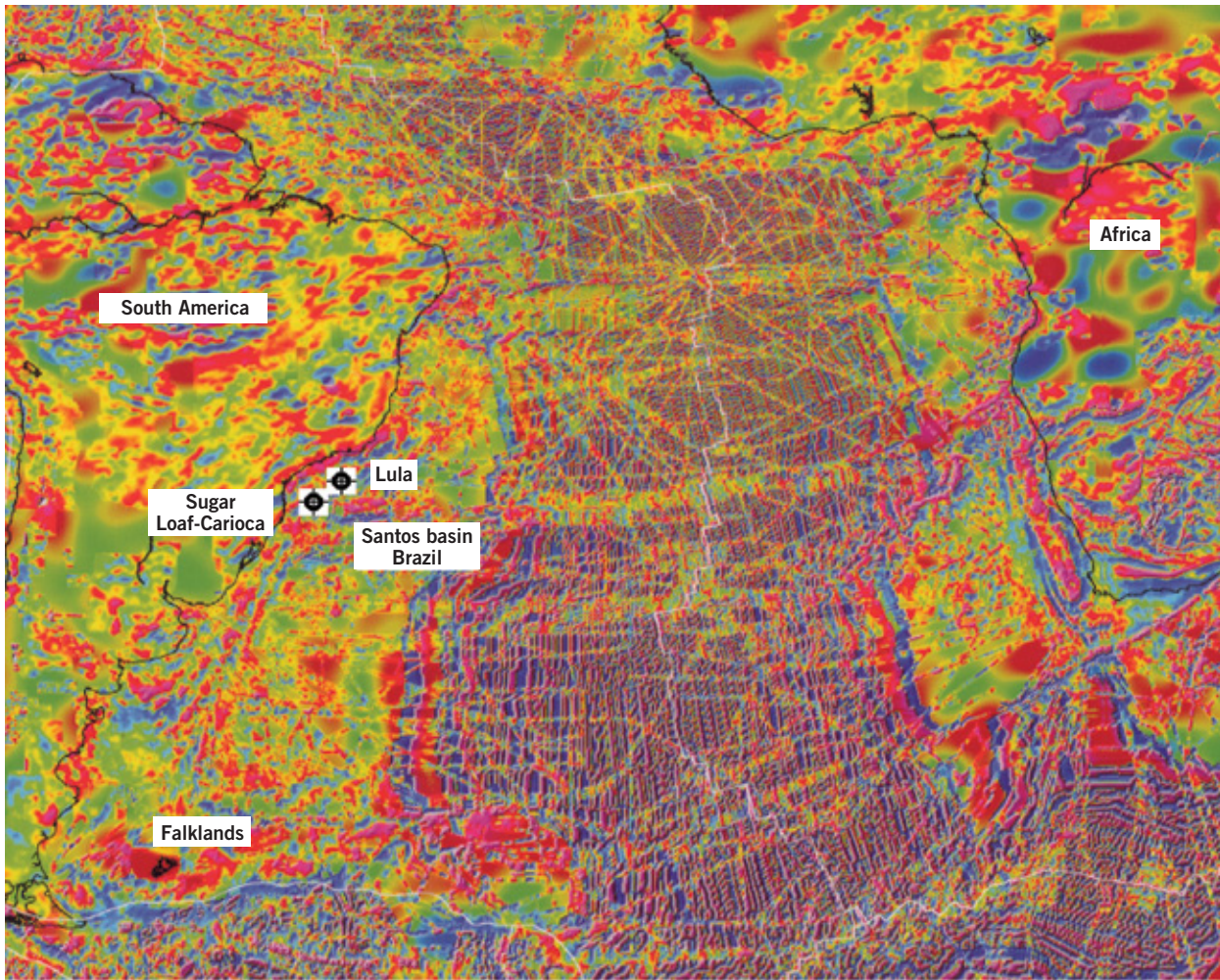


*Note the contrast in magnetic pattern between the crystalline basement of the Fennoscandian Shield to the northeast and fragmented Europe southwest of the Tornquist Line, a major fault system.

z1103070G.jxja02

SOUTH ATLANTIC*

FIG. 3

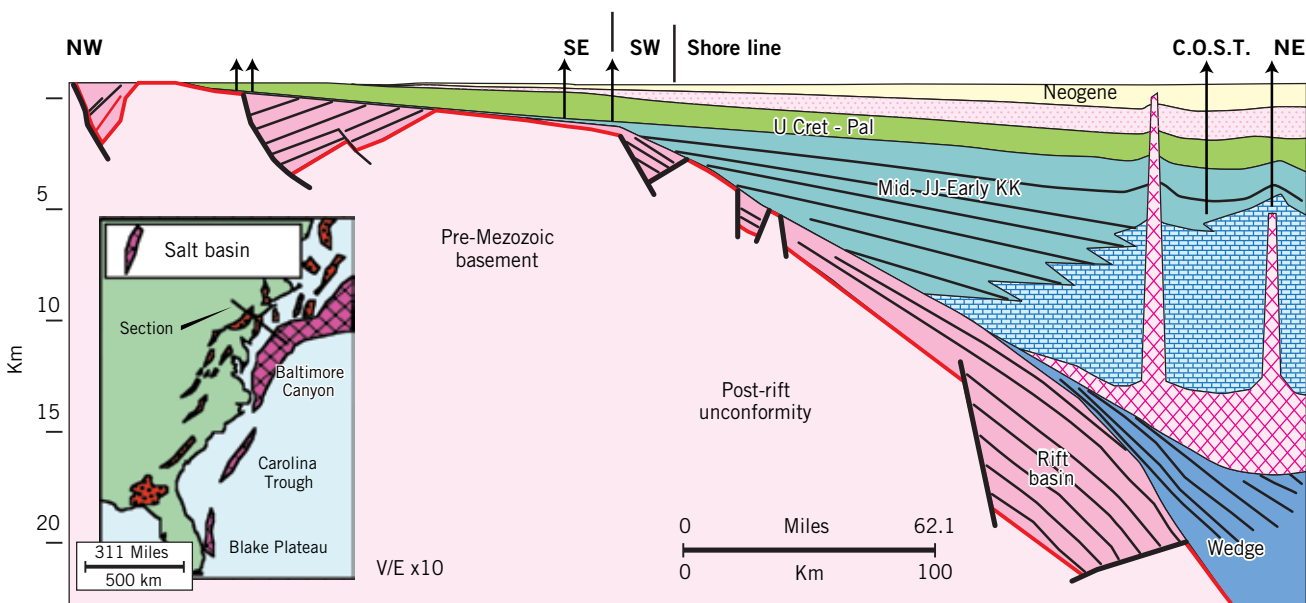


*Note the large extensions of the magnetic signature of South America and Africa below the ocean.

z1103070G.Jja03

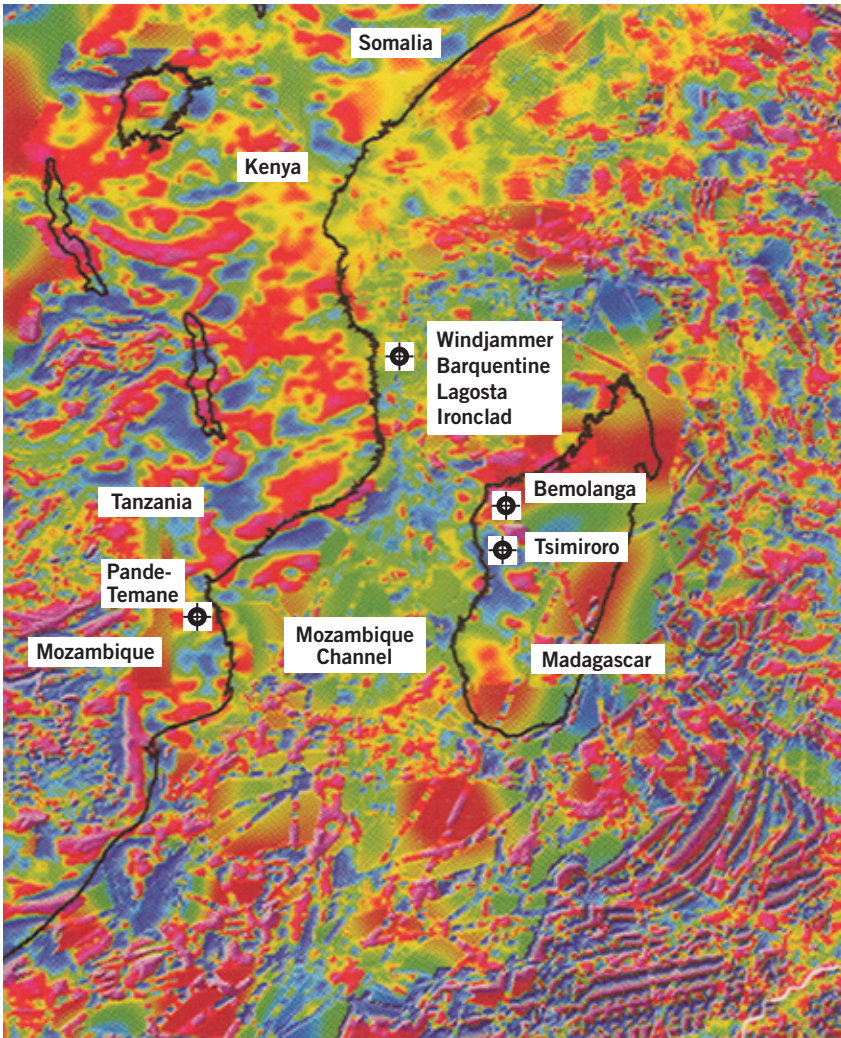
EASTERN NORTH AMERICA*

FIG. 4



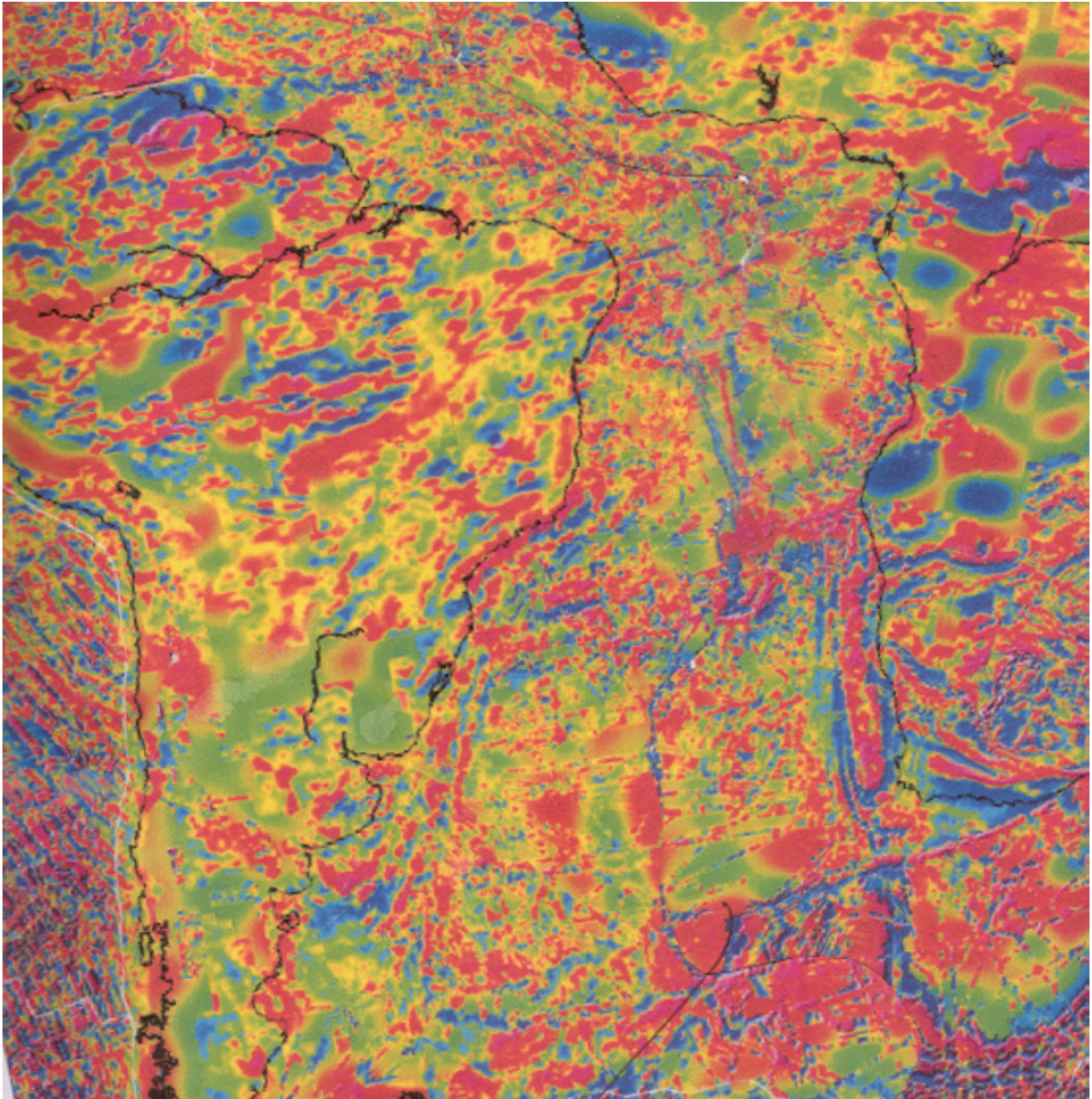
*Structure and stratigraphy of the offshore area (James, 2009, Fig. 6; after Benson & Doyle, 1988, and Manspeizer, 1988-inset). Source: After Korhonen et al., 2007.

z1103070G.Jja04



*Shows occurrences of gas on the mainland and offshore and heavy oil fields on Mozambique.

z11030706.lxja05



*Approximate Pangean reconstruction after removal of the central striped area of Fig. 3.

z1103070G.Jxpa06